



*Family Service Association  
of Redlands*

# Inspiring Solutions and Bridging the Gaps

2024 Annual Report

# Opening Letter

At the start of 2024, Family Service was equipped with a well-defined and collaborative strategic plan created by the board of directors, staff, and clients. The enthusiasm and reignited dedication to our mission has been palpable this entire year. The support from donors and the community proved as strong as it has ever been for our agency.

We have determined to act and be solution driven in dealing with the complex housing issues of our times. We worked with government partners, acquired new contracts, and adjusted the infrastructure within our agency to accommodate both the increased energy and needs in the community. Our service count numbers continue to climb but our goals of fighting and preventing the devastating effects of homelessness and hunger remain unchanged.

We continued our crucial work within the City of Redlands with the Encampment Resolution funding (ERF grant). We housed forty-four formerly chronically homeless households with intense case management. Our satellite office in Yucaipa experienced a higher profile in the community with increased donations and community needs met. In collaboration with the City of Yucaipa Outreach team, we administered housing and food to nearly one hundred families.

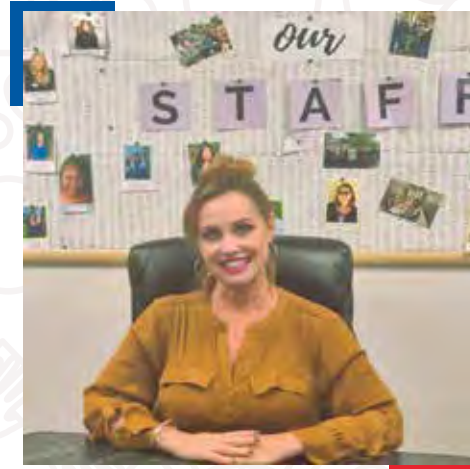
Our fundraising events, Dinner in the Grove and the Redlands Hunger Walk/Run, continue to be highlights of our year - providing core operating support at Family Service. Garnering new business relationships and community participation was the successful outcome of our new and fresh spring fundraiser event, the Redlands Royalty Pub crawl.

Last but not least, we received two significant bequests from former donors and champions of our mission. We are incredibly grateful for the interest and gifts related to our work.

We are honored to lead such a dynamic agency and are indebted to everyone who contributes to our work of serving clients in crisis.

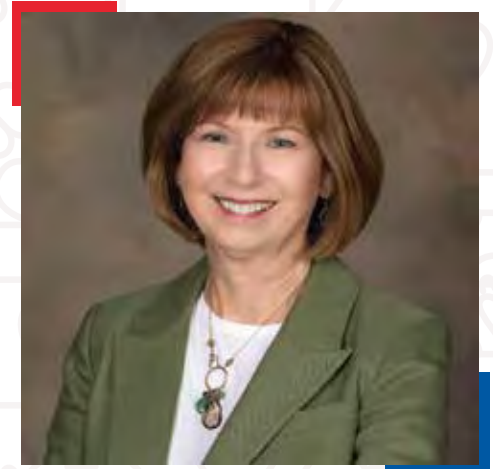
**This report is dedicated to YOU, the unsung heroes, donors, volunteers, and believers of our mission.**

With enthusiasm, we present our full report of accomplishments for 2024.



**Kyra Stewart, M. Ed**  
Executive Director

A handwritten signature in black ink that reads "Kyra Stewart".



**Carol Snodgrass**  
Board President

*Carol Snodgrass*



2024 Family Service Executive Committee and special guests from left to right: Mayor Eddie Tejada; Board President, Carol Snodgrass; Vice President, Gary Fagan; Secretary, Debbie Evans; Treasurer, Diane Remy; Vice President, Housing, Joseph Shaw, and City Council Member, Jenna Guzman- Lowery (not pictured Vice President, Resource Development, Matt Miller).

## 2024 Executive Committee

Board President – **Carol Snodgrass**

Vice President, Strategic Planning – **Gary Fagan**

Vice President, Resource Development – **Matt Miller**

Vice President, Housing – **Joseph Shaw**

Secretary – **Debbie Evans**

Treasurer – **Diane Remy**

## Board of Directors

Pam Allen  
Stephanie Banks  
Marilyn Bean  
Ann Bryan  
George DeLange  
Robert Heinze  
Renee Kern  
Rafael Larios  
Janine Ledoux

Barbara Rozema  
Lori Shelffo  
David Shippee  
Shelli Stockton  
Terry Vines  
Joyce Volsch  
Christopher Walker  
Tyler Waner  
Ellen Weisser

## 2024 -2025 Family Service Staff

Kyra Stewart, *Executive Director*

Jennifer Watson, *Resource Development Manager*

Corey Romo, *Program Director*

Samantha Morgan, *Administrative Office Manager*

Donna Olson-Jones, *Development Associate*

Andrea Laughlin, *Grant writer*

Adela Brown, *Accounting Clerk*

Hannah Rodriguez, *Housing Manager*

Rolesha Anderson, *ERF Case Manager*

Stephanie Castaneda, *Program Resource Coordinator*

Aundrea De La Cruz, *Donations Center Lead Coordinator*

Trevor Hamilton, *Program Assistant*

Ian McMahon, *Program Assistant/Data Entry*

Jennyfer Melgoza, *Case Manager/Employment Specialist*

Paula Petty, *Case Manager*

Sabrina Song, *Marketing and Volunteer Coordinator*

Shawntries Thompson, *Case Manager*

# 2024 SERVICE COUNTS



**3,555**

Total Families Served

**12,661**

Number of Total  
Individuals Served



**1,151**

Volunteers

**17,708**

Volunteer Hours

## FOOD DISTRIBUTION:



**176,804**

Donated Food –  
weight by pounds

**23,138**

Meals Served  
through the Daily  
Breakfast Nutrition  
Program

**2,481**

visits to the  
clothing/surplus  
food distribution  
days

**1,269**

Drive Thru  
Food Boxes  
Administered  
via 16 hosted  
distribution days

## HOUSING ASSISTANCE:



**196**

Families Facing Eviction  
Received Emergency  
Rental Assistance

**318**

Months of Rent paid for  
families in a housing crisis

**1,193**

Motel Voucher Nights Issued  
includes 190 unhoused children  
with no other shelter options at  
point of intake

**55**

Unhoused/Homeless families  
were stabilized after receiving  
assistance at Family Service



## SUPPORT SERVICES:

**89**

Transportation –  
gas vouchers or  
bus passes

**36**

Job  
Development  
Appointments

**17**

Breakfast Club  
Scholarships  
Administered for  
Education and  
Employment Goals



## CLOTHING DISTRIBUTION (BY NUMBER OF VISITS):

**1,074**

Families visited  
the clothing room

**3,961**

individuals benefited  
from the clothing  
room visits





**CLASSES:**

**13**

Parenting Classes  
(in partnership with  
Walden Family  
Services)

**7**

Financial Literacy  
Support Groups  
Hosted

**11**

English as a Second  
Language Classes hosted  
(in partnership with The  
Church of Jesus Christ of  
Latter-day Saints)

**9**

STEAM  
Workshops  
Hosted



**HOLIDAY  
PROGRAMS:**

Family Service Association also hosted Dia de los Ninos and Harvest celebrations, held five summer movie events for children and provided Christmas trees to 36 families.

**329**

Children Received  
Gifts from our  
Holiday Shop Room

**191**

Halloween  
Costumes  
Distributed

**111**

Children Received Easter  
Basket Organized by  
Friends of the Family

**82**

Christmas  
Adopt-A-Family  
representing 236  
children

**169**

Thanksgiving  
Food Boxes  
Distributed

**115**

Thanksgiving  
Adopt-A-Family  
representing 311  
children

**39**

Families Participated  
in the Client Christmas  
Party in partnership  
with ESRI and the  
River Church

**88**

Easter Food  
Boxes Distributed

**124**

Christmas Food  
Boxes Distributed



# HOUSING PARTICIPANT STABILIZATION SUMMARIES

**The contributions you make impact the lives of others**

During the last quarter of 2024- a single mother of a 4-year-old autistic son experienced a domestic violence incident and arrived at Family Service for assistance with shelter, food and housing. During the case management interview, it was revealed that homelessness occurred due to a series of violent situations with her spouse. The young mom filed a protection order. In the meantime- Family Service staff rushed to her side by providing emergency motel vouchers to place her in a safe place while she worked on her housing goals and took care of the vulnerable son. During the emergency motel stay, Family Service staff worked with a faith-based partner and a local counseling agency to identify both mental health programming and housing options for her. After several weeks, the young mom was able to move into her own place with collaborative investment from both the faith-based partner and Family Service housing funds. The family also received hygiene kits, emergency food and holiday support – thereby stabilizing and lessening the toxic stress that occurs in a crisis of this nature.

A single working father with two children experienced an unexpected loss of income due to his employer laying off staff and through no fault of his own. During this same time frame- his one-year-old daughter experienced extreme health problems related to an identified heart problem. With his daughter in the hospital, father was commuting back and forth to visit her which caused additional expenses in an already strained financial situation. Fortunately, a new job was secured even through the hardship, however, the series of events left him behind on his rent. An appointment with a Family Service case manager, identified his eligibility into the Housing Program and the agency was able to pay his past due rent, enabling him to catch up and stabilize his crisis. Family Service was also able to provide emergency food, clothing, hygiene kits and gas cards to help him during this challenging time.

A low-income working mother of two who recently experienced a separation from her spouse, arrived at the agency for emergency rental assistance. The separation caused the household to go from two income streams to one, which caused ongoing financial hardship. The working mother subsequently got behind on rental payments despite trying her best effort to keep up. After working with a case manager, financial assistance from the Family Service housing program allowed the mom to get out of crisis and eliminate the chance of becoming homeless. This household also received transportation support, access to holiday programming and clothing items to assist in the basic needs of the children.





# THE YUCAIPA OUTREACH PROJECT

A PROGRAM OF FAMILY SERVICE ASSOCIATION OF REDLANDS

With the support of both Redlands Community Hospital and the City of Yucaipa, Family Service hosts a satellite office at 11985 4th Street Yucaipa CA 92399.

2024  
SERVICE  
COUNTS

**96**

Total Families

**257**

Total Individuals

## Housing Assistance:

**15**

Emergency Rental Assistance – number of families

**53**

Motel Vouchers Issued

**31**

Months of Rent Paid

**4**

Deposits

## Food Distribution:

**497**

Bags of Food Distributed

**36**

36 Stater Bros. Gift Cards distributed to families in need

**3,107**

Pounds of food donated by local Scouting America groups

In 2024, **96** Yucaipa families received services at the Yucaipa location and 12 of these families were new to the Yucaipa Outreach Project (YOP).

In 2024, **31** months of rent were paid for 15 families representing 23 adults and 31 children.

In 2024, **4** emergency rental deposits were paid (4 adults and 6 children).

In 2024, **53** emergency motel vouchers were issued for 31 unsheltered/homeless families representing 34 adults and 24 children.

Each registered client receives case management, access to the clothing room, bus passes, gas cards and hygiene kits when needed. All Yucaipa clients are invited to events that are hosted at the Redlands campus—including but not limited to: English as a Second Language classes, Financial Literacy support groups, Montessori Parenting, STEAM workshops and holiday programming.

**5**



Pictured are Family Service Staff members (l to r) Hannah Rodriguez and Stephanie Castellanos in the clothing room at the Yucaipa office



Yucaipa Food Pantry



Pictured (l to r) Executive Director, Kyra Stewart and Hannah Rodriguez at the front of the Yucaipa Outreach Project office

# City of REDLANDS

## New Program and New Avenues to Help Families in High Crisis

The City of Redlands Encampment Resolution Funding (ERF) continued into 2024 as we worked diligently to fight against homelessness right in our own backyard.

**44** **CHRONICALLY HOMELESS INDIVIDUALS AND FAMILIES WERE ASSISTED AND PLACED IN HOUSING IN 2024.**

With collective efforts of outreach agencies, motel voucher bridge housing entities, employment services, and landlords, each unhoused individual identified by the City of Redlands has been assigned a case manager. They were also connected to mental health, employment and wrap-around services, for a hopeful successful outcome.



Pictured from left to right: City of Redlands Outreach Team Tess Bertan, David Rabindranath, Nancy Felix.

## ENCAMPMENT RESOLUTION FUNDING



Pictured from left to right: Rolesha Anderson, ERF Case Manager and Abi Pote, Lead Case Manager.

# 2024 Family Service Volunteer Numbers Increase

Volunteerism at Family Service has increased substantially over the past year. We are so fortunate to observe an increase in the involvement of new and additional service groups, retired community members, businesses and local schools as well as university students and corporations seeking for ways to get involved.

**We are happy to report an approximate 30% increase in volunteerism!**

2024

Volunteers

1,151

Volunteers Hours

17,708

2023

Volunteers

757

Volunteers Hours

15,620

Family Service volunteers make a difference in the lives of others by preparing meals, organizing toy drives, working in our food pantry, sorting clothing and more. A huge thank you for all who get involved in work that impacts lives.



Volunteers receive tokens of appreciation as Family Service celebrates National Volunteer Recognition Week.



Home Depot Volunteers cook a hot breakfast for the nutrition program.



John Malcom, a long-standing volunteer and University of Redlands work study intern, holds up a Family Service t-shirt.



The University of Redlands basketball team lent a hand at the agency donations center.



Kaiser Permanente employees enjoy a day of community service and pack food boxes for the community.



# INAUGURAL REDLANDS ROYALTY PUB CRAWL – A NEW SPRING 2024 PARTNERSHIP FUNDRAISER

With inspiration drawn from a Riverside-based nonprofit event and the local partnership of the Unforgettables Foundation, Family Service launched a new Spring Fundraiser named the **Redlands Royalty Pub Crawl**. A dynamic planning committee, which consists of Family Service Board members Tyler Waner, Rafael Larios, Lori Shelffo, Joseph Shaw, Resource Development Manager, Jen Watson, and the CEO of the partnering organization, Tim Evans, created a synergy difficult to beat.

Local bars and restaurants agreed to host hundreds of attendees, providing a featured craft or signature drink and small bites at each location.

The event also featured a **Redlands Royalty King and Queen court voting opportunity**, with the following leading lady nominees: Beajay Baldwin, Owner of Arbor Life Spa; Amy Mulder of St. Moore Insurance; and Jessica Bouzane of Berkshire Hathaway Home Services.

The King Court consisted of Marvin Hudson, Owner of Viewpoint Financial; Al Hernandez of Citrograph Printing Co.; and Jonathan Pauls, Commercial Real Estate Broker.

The ultimate winners, aside from the benefiting organizations, were Jessica Bouzane as Queen and Jonathan Pauls as King.

The friendly competition, along with ticket sales, raffles, and sponsorships, enabled the event to raise \$15,000 in core support for each organization.



## FAMILY SERVICE CELEBRATES 20 YEARS OF SUCCESSFUL DINNER IN THE GROVE FUNDRAISING EFFORTS

With two decades of successful Dinner in the Grove fundraising efforts celebrated in 2024, a group of active volunteers worked alongside Jen Watson, Resource Development Manager and put the pieces together for yet another lively Dinner in the Grove.

The spectacular event has grown in both attendance and fundraising outcomes.

For two decades, the event has been hosted at the beautiful Orange Grove property of Jack and Laura Dangermond. The planning efforts are led by Char Burgess and co-chair Shelli Stockton.

With the lovely sound of music in the air, a busy wine pull ensues as hundreds of amazing auction items are beautifully displayed for close to five hundred attendees. The gorgeous sunset views paired with a divine catered meal, create the perfect backdrop for an enjoyable and productive evening.

Dinner in the Grove successfully raised more than **\$250,000** in net income, which assists with core support to the agency. We are so grateful to each attendee, sponsor, underwriter, planner and donor.

**THANK YOU FOR CONTRIBUTING TO THE MISSION OF FAMILY SERVICE!**



# *Dinner in the Grove*



# Redlands Hunger Walk

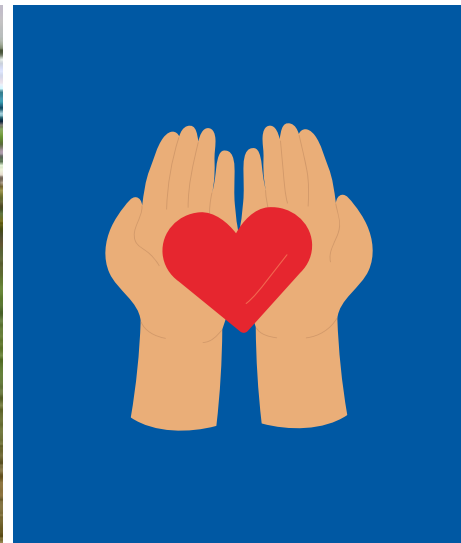
**The Redlands Hunger Walk/Run Raises Support for the growing needs of the community**

The Redlands Hunger Walk/Run is held on the beautiful campus of the University of Redlands, and in 2024 hosted close to 300 walkers. The early morning included a pancake breakfast provided and served by the Redlands Noon Kiwanis club, helpful volunteers, a variety of resource tables, motivating music and a morning stretch exercise for eager walkers and runners.

With planning efforts led by Terry and Geneil Vines, the seamlessly coordinated event raised **\$44,000** to support the Family Service ever growing food programming.

With soaring food prices in 2024 **22,749** meals were served at the agency campus via a daily breakfast and nutritional program.

The agency hosted 16 food box drive thru days in which over **1,200** food boxes were distributed to the community.



# FSA in Action



Eastside Christian Church hosted a shoe drive for Family Service.



A family of volunteers smile at the Fall Food Drive.



YMCA Board Members bring much needed hygiene kits to FSA.



Board Member of Redlands Community Foundation, Lori Hatfield presents a check to Family Service/Board President, Carol Snodgrass.



Thanksgiving Adopt-A-Family wagons received from Redlands Community Hospital.



Corey Romo, Program Director, hosts a resource table at the Grand Opening of Shake Shack in Redlands, CA.



Kyra Stewart pictured with Rachael Rubalcava author of Westa and the Wind.



Bob and Judy Cannon, Church of Jesus Christ and Latter-Day Saints members and leaders of the fall food drive are pictured with Program Director, Corey Romo.



Pictured at the Annual Installation meeting from left to right are Board President, Carol Snodgress, Mayor Eddie Tejada, and board members Char Burgess, Deborah Crowley and Yolanda Contreras.



Friends of the Family members pose with Easter baskets they helped create and distribute. From left to right: Susan Kelly, Lowa Anderson, Jane Henry, Roberta Collins.



Executive Director, Kyra Stewart on the right, receives a check from the Rosendin Foundation at a meeting in Anaheim, CA.



Y'aamava Casino and Resort/San Manuel Band of Mission Indians employees devote time in the food pantry.



Hundreds of volunteers show up to help at Fall Food Drive.



Volunteer packing a food box into the car of a family in need.



Past President of Family Service, Lori Hatfield, Board Pres. Carol Snodgress, Jane Henry and Executive Director, Kyra Stewart attend the Annual Breakfast Club of Redlands event.

# STAFF SPOTLIGHT

## 35 YEARS OF DEDICATED SERVICE *Lori Villarreal*

We celebrate the long standing service of Lori Villarreal and appreciate her dedication over the years.

Lori is a Program Assistant and her main role within the organization involves the lobby and reception area, greeting clients and answering phones. For decades she has been the first smiling face our clients, volunteers and guests see when they open the doors of the agency.

Lori has lived through many leadership changes, programs, management styles and locations since her start year of 1990. In fact, she started her employment at the Colton Street office in which Family Service shared office space with United Way. Core services at that time included food, clothing and holiday support programming.

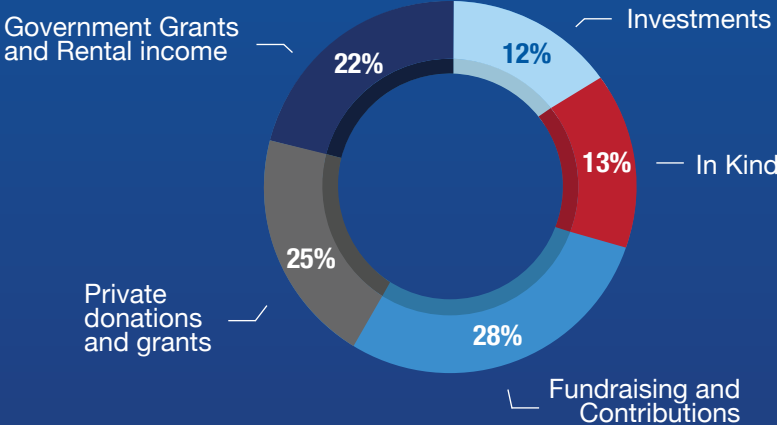
When asked what the favorite aspect of her job is she answered quickly, "I am a people person and I love working with the public," she said. My favorite program is Adopt-A-Family because the children and families are always so happy," Lori continued. "Family Service has grown so much and I love it because we get to help so many people now." continued Lori.

Lori lives in Redlands with her family and is deeply involved with her church. She loves to walk, garden and spend time with her loved ones. "She is a joy to work with and an absolute gift to our team," says Executive Director, Kyra Stewart.

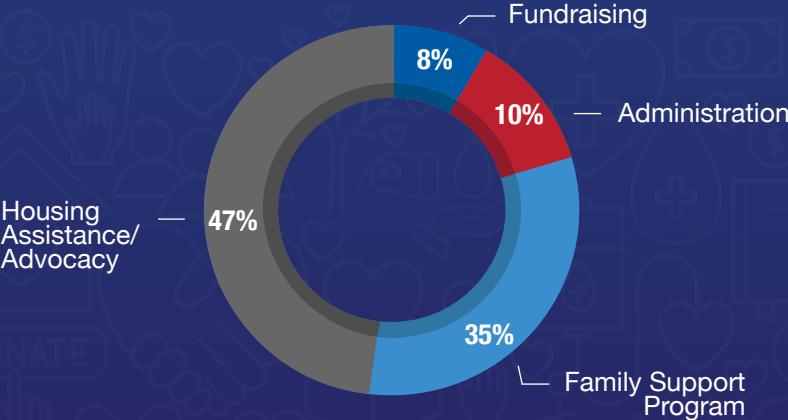
Pictured is Lori Villarreal still smiling even after 35 years.



# 2024 INCOME



# 2024 EXPENSES



## GOVERNMENT PARTNERSHIPS AND CONTRACTS:

- Coummunity Development Block Grants:
  - City of Redlands
  - City of Yucaipa
  - Community Activity Grant
  - Emergency Food and Shelter Program
  - Emergency Solutions Grant
  - City of San Bernardino
  - County of San Bernardino
  - Encampment Resolution Funding
  - Office of Homeless Services
  - Homeless Housing Assistance Program

## FOUNDATIONS AND PRIVATE GRANTS:

- Bishop’s Storehouse
- Inland Empire Health Plan Foundation
- Inland Empire Community Foundation
- Kaiser Permanente
- National Family Legacy
- Nordstrom
- Raymond Pryke Foundation
- Redlands Community Foundation
- San Manuel Band of Mission Indians
- Stater Bros. Charities
- Teichert Foundation
- The Annenberg Foundation
- The Rosendin Foundation
- Walmart

# THANK YOU 2024 DONORS

## **PLATINUM (\$75,000 and up):**

Esri  
Pauline Ingle Revocable Trust

## **AMBASSADORS (\$25,000 - \$74,999):**

Bearie, Brian & Julie  
Lemann, William  
Lindsey, Bill & Barbara  
Marvin, David & Tami

## **FOUNDER (\$15,000 - \$24,999):**

Berry, Donald & Ellen Marie  
Hovey Tile Art  
Kaiser Permanente  
Majestic Realty Foundation  
Malachowski, James & Rebecca  
Rochford, Tim & Carol  
WISE Healthcare

## **BENEFACTOR (\$10,000 - \$14,999):**

Andreasen, Troy & Demeree  
Breakfast Club Of Redlands Inc  
Broome, Dale & Susan  
Heinze, Bob & Betsy  
Larry Jacinto Construction, Inc.  
McLaughlin, David & Diana  
Mission Pediatrics  
Myron F. Ratcliffe Foundation  
Paul D. Ware Charitable Foundation  
Prieto, Latisha  
Riordan, Barbara  
Serros, Edward & Linda  
Spencer, Tilden & Nancy  
The Will J. Reid Foundation

## **GUARDIAN (\$5,000 - \$9,999):**

Bean, Gerald & Marilyn  
Bryan, Vaughn & Ann  
C-21 Lois Lauer Realty  
Eastside Christian Church  
First Baptist Church Of Redlands  
Fletcher, Janet  
Frykman, Annette  
Hal Hays Construction  
Jacobson, Lloyd & Janice  
Kaney, Tom & Karen

KWB Wealth Managers Group  
Lossett, Cheryl  
Martinez, Selina  
Maupin Payne Financial Advisors  
Maupin, David & Robin  
Nance, Richard & Barbara  
Optimist Club Of Redlands  
Portney, Jamie  
Pure Gold Professionals In Dentistry  
Redlands Community Hospital  
Rita Shaw Broker & Associates Inc.  
Running, Ron  
Salvesen, Kathleen

Seiberling, Monroe & Pat  
Shaw, Joseph & Rachel  
Snodgrass, James & Carol  
Stifel Nicolaus & Co., Inc.  
Stuart Street Redlands LLC  
The Kiwanis Club of Redlands  
Thibedeau, Richard & Kristin  
Walker, Chris  
Weisser, Stan & Ellen  
Yurkosky, Pete & Brandy  
Zdrojewski, John & Donna

## **STEWARD (\$2,500 - \$4,999):**

Abushanab, Daniel & Heather  
Ally Financial Inc.  
Andrews, Dick & Cindy  
Anonymous  
Cohoe, Garry & Elaine  
Contour Dermatology & Cosmetic Surgery  
Crowley, Keith & Deborah  
Eppehimer, Ryan & Sarah  
ETop Technology  
First Congregational Church  
First Lutheran Church  
First Presbyterian Church  
Gill, Carolyn  
Guiles, Norman & Sharon  
Hatfield Buick - GMC  
Hone, Philip & Dawn Marie  
Hutchinson, Doug & Linda  
Koss, Peter & Melissa

Loma Linda University Health  
Martin, Faydell Pressly  
Morasco, Sue & TenBrink, James  
Moss, Gigi  
Osborne, Sarah & Adomshick, Chris  
Phillips, Jon & Sabine  
Rochford Foundation  
Rodello, Robert & Dahlia  
Sandel, Anne  
Shelby, Kirk & Clover, Caryl  
Simple Generosity/Target Circle  
Stephany, Ron  
Van Berkem, Tom & Cathy

## **HUMANITARIAN (\$1,000 - \$2,499):**

Adame, Henry & Denise  
Ahern, Thomas & Alice  
Alvarez, Christopher  
Angelides, Dean & Laura  
Asgarzadie, Farbod & Blackburn, Allie  
Bailey, Wayne & Heather  
Ballantyne, Thomas  
Bangsund, Luann  
Bathgate, Kenneth & Sheila  
Battaile, Thomas  
Becker, Steve & Vickie  
Belote, Jim & Patti  
Berg, Tom & Deborah  
Bishop, Stephen & Linda  
Board of Supervisors  
Bunnell, Bill & Marilyn  
Burch, Russell & Jan  
Burgess, Larry & Charlotte  
Burgess, Ron & Molly  
Contreras, Yolanda  
Corneille, Richard & Colleen  
Cutler, Tom & Julie  
Dahlgren, Karen  
DeLange Jr., George & Marie  
Derrenbacher, Bill  
Dewey, Michael & Lisa  
DiBiase, David & Valerie  
Dieterich, Greg & Geri  
Doolittle, Phillip

Driessnack, Bob & Paula  
Emmerson, Bill & Nan  
Estelle, Lorraine  
Fagan, Gary & Marcia  
Farley, John  
Fields, Greg & Julie  
First Church Of Christ Scientist  
First United Methodist Church  
Fong, David  
Fuller, Corey & Juliana  
Glaze, Alexis  
Gomez, Ed  
Grinnals, Richard & Malissa  
Guidry, Yvette  
Hardy, Bill & Sue  
Hatfield, Bill & Lori  
Hatfield-Odero, Kailey & Odero, Nevin  
Haueter, Dan & Villa, Steven  
Hodges, Robert & Patty  
Holcomb, Michele  
Hurlbut, Karen  
Hurlbut, Susan  
Innova Disc Golf  
Kavanaugh, Craig & Michelle  
Khazaeni, Babak & Leila  
Krause, Richard & Weis, Annette  
Kress, Michael & Renee  
Ledoux, Janine  
Leonard, Larry & Ann  
Lewis, Janet  
Lorenzo Descansando, LLC  
Love, Mary  
Maiberger, Joseph & Kathy  
Marshall Life & Financial Solutions  
Matson Waner Wealth Management  
Mayhew, Diane & McGinn, Michael  
McMahon, David & Ann  
McMahon, Neil & Genee  
Meals, Robert  
Miles, Duncan & Vicki  
Milloy, Wayne & Doris  
Morris, Teresa  
Mudge, Devin & Mallory  
Mulder, Tim & Amy  
Mullooly, Bill & Wynell  
Munz, Larry & Cindy

Nies, Boyd  
Norberg, Viktoria  
O'Prey, Bernie & Evelyn  
Oster, Linda  
Paradox Church  
Park, Jean  
Pauls, Jonathan & Marylou  
Paulson Orthodontics  
Pickett, Hugh  
Ramsay, John & Susan  
Redlands Day Nursery  
Reiss Jackson & Company  
Remy, Mike & Diane  
Rettig, Franz & Susan  
Reynolds, Jennifer  
Richards, Ron & Peggy  
Ritchie, Alen & Carolyn  
Rold, Kerry & Vicki  
Rosario, Carolann  
Rotary Club Of Redlands  
Rowe, Dawn  
Rozema, Randy & Barb  
Sanborn, Michelene  
Schmidt, Edith  
Schneider, Roger & Aida  
Sellas, James & Annie  
Shake Shack  
Shelffo, Rod & Lori  
Sherman, Jan  
Shimoff Law Corporation  
Shook, James & Brenda  
Smith, Daryl & Gail  
Solter, Marilyn  
Stanners, Jeff & Lisa  
Stellar Solutions Foundation  
StGeorge, Donna  
Stindt, Jeralyn  
Stockton, Shelli  
Stockton, Stephen & Leda  
Suk, Andrew & Kay  
Sullivan, Tim & Shelby  
Tailwinds Charitable Foundation, Inc.  
Terhorst, Philip & Lynda  
Thole, Roberta  
Tincher, John & Karen  
Tolerico, Frank & Ann

Tolerico, Frank & Ann  
Tolsma, Ryan & Miriam  
Tune, Don & Nancy  
United Church Of Christ  
Volsch, Miles & Joyce  
Walsh, Brian & Sherry  
Wanchoo, Maharaj & Ranjana  
Wieder, Carolyn  
Wiens, Marion  
Williamson, Valerie  
**PATRON (\$500 - \$999):**  
AAA Alarm Systems  
AASI Services, Inc.  
Anderson, David & Lowa  
Armantrout, Julie  
Armendarez, Jesus  
Balderrama, Larry & Ann  
Baqai, Iffy & Waheed  
Barbo-Partain, Judy  
Bellinder, Michael & Marilyn  
Berg, Harry & Ellen  
Bierschbach, V.A.  
Blomquist, Don & Michelle  
Board Game Paradise  
Bowman, Judith  
Brubacher, Elaine  
Busek, Joseph & Annette  
Cameron, James  
Cencirulo, Roy & Kathy  
Chandler, Evelyn & Chris  
Chang, Diane  
Clark, Kenneth & Harriett  
Clark, Robert  
Collins, Sharon  
Comparan, Ignacio & Marlette  
Couperus, James & Cheryl  
Crawford, Barry & Connie  
Davis, Willie  
Depotey, Ashley  
DeWitt, Daniel & Janice  
Dill, Russell  
Dipretoro, Cheryl A.  
Diversified Pacific  
Ellinger, Robert & Lois  
Emge, Thomas & Teesie  
Evans, Tim

Farmer, Laura  
Filippi, Stephen & Caroline  
Flood, Sydney  
Fujiwara, Tom & Carol  
Geissinger, James & Patricia  
Gifford, Margie  
Golden, Bruce  
Goral, William & Jan  
Griffith, Karen  
Gruenler, Eric  
Gusseck, David & Evelyn  
Haan, Sanghee  
Hadley-Scotfield, Merrilee  
Hamilton, Sharalyn & Edison, Sam  
Hardesty, Michelle  
HITDNA, LLC  
Hockenbraugh, Jeffrey  
Holland, Nancy  
Hukriede, Scott & Ricklyn  
JB & JB Operations  
Jenkins, Timothy & Valerie  
Jordan, Matt & Jill  
Juback, Alex  
Kahn, Keith & Jan  
Kallander, Ron & Kay  
Kensok, Orville  
Kern, Blaine & Renee  
Knudson, Gary & Joy  
Lavine, Karen  
Leonard, Sherli  
Lester, Cantrell & Kraus, LLP  
Loma Linda Heat & Air Conditioning, Inc.  
Matney, Richard & Tracey  
McAllister, Caroline  
McCarville, Brian & Ellen  
Mckechnie, Roger  
Mead, Jim & Annemarie  
Mercer, Scott & Kathy  
Montessori Kids Land Academy  
Moore, Christopher & Malia  
Moreland, Keith & Gloria  
Mounzer, Maroun & Gisele  
Mundy-Hardesty, Inc.  
Noble, Stephanie  
Oi, Karen J.  
Park, Eunice

Petros, Dennis & Joanne  
Pierce, Kristin & Marshburn, Steve  
Pitsaros, Ted & Judy  
Poole, Sharon  
Pope, Colleen L.  
Priest, Paul  
Ramos, Richard & Penny  
Real Endpoints  
Rendler, Dan & Michele  
Rivera, Christina & Ponce, Art  
Rodriguez, Andrew & Marcia  
Rogers, Nancy  
Romo, Christopher & Michelle  
Ross, Valerie  
Rowland, Bruce & Linda  
Rudrich, Horst & Aleta  
Saint Moore Insurance  
Samtoy, Bernard  
Satzger, Bruce & Susan  
SGH Architects, Inc.  
Shaw, Jeff & Irene  
Shaw, Marvin & Rita  
Shefchik, Daniel  
Shimoff, Paul & Susan  
Silva, Richard  
Simmons, Barbara  
Sommer, James & Diana  
Spieske, Douglas & Kattus, Sarah  
Splain, Mark  
Streit, Dave & Martha  
Szukalski, Bernie & Sandy  
Talley, Janise  
Taylor, Clark & Paula  
Thomas, George & Betty  
Thomas, Griffith  
Waner, Neal & Joyce  
Weaver, Luby & Carolyn  
Weiss, Ellen  
Wells Fargo Bank  
White, Susie  
Wick, Chas  
Williams, John & Mary  
Wilson, David & Marguerite  
Wings Of Hope Hospice  
Yucaipa Peak Performance  
Zabaleta, Frank & Mary

### **SUPPORTER (\$250 - \$499):**

Adams, Jennifer  
Adams, Scott & Diane  
American Legion Post 106  
Baker, Thomas & Janet  
Barich & Associates Insurance  
Baylink, David  
Beasley, Craig & Emily  
Bell, Karen  
Bidaki, Abraham & Linda  
Bidaki, Laila  
Blad, Karin  
Blue, Cheri  
Bomberger, Tracy  
Bourne, Robert & Denise  
Brandstater, Murray & Josiane  
Bricker, David & Lauren  
Brier, Peggy  
Brown, Clint & Charlene  
Burger, William & Natalie  
Burton, Lee  
Bussell, Mark & Rachelle  
Bye, Jonathan  
Cadwallader, Donna  
Cajon Pharmacy  
Calkin, Pauline  
Carter, Allan & Londa  
Castorena, Minerva  
Centeno, Stephanie  
Christiani, Lucas  
Citrus HOA Management  
Clark, Kim  
Cochran, Kathryn  
Collato, Brandi  
Collins, Kim  
Costa, Nicholas & Amber  
Couts, Bill & Donna  
Crafton Hills College Foundation  
Curren, Kahnema  
Curti, Louis & Amy  
Cutler, Charlie & Adriana  
Davis, Denise  
Davis, Peter & Serena  
DeBold, Raymond & Mabel  
Dill, Monty & Carol  
Dining In Style Personal Chef Service  
Dixon, Varonica

Dora P. Waters Investment  
Downey, Christina  
Egan, John & Ellen  
Elkins, Robert & Amy  
Elliott, Cindy  
Emerson, Paula & Pamela  
Evans, Tim & Debbie  
Felsen, Aniko  
Fisher, Dolores  
Freitag, Adelheid  
Friends Of The Family  
Gallagher, Mick & Sandy  
Gaylord, Jeannie  
Gifford, Mary Nell  
Gonzales, Anne  
Gonzales, Nikki  
Gorden, Mark & Christy  
Hanchett, Chelsea  
Harkness, Brian & Mary  
Harris, Mark & Monica  
Hatfield, Crista  
Heaney, Kevin & Yvonne  
Henry, Jane  
Heyming, Frank & Lucy  
Honeycutt, Dale & Jane  
Houck, Evan & Laura  
Hylkema, Mary C.  
Iannone, Michael & Juliana  
Inland Empire Commercial Real Estate,  
Inc.  
Jones, Greg & Silvia  
Jury, William & Constance  
Kelly, MaryAnn  
Kennedy & Kennedy CPAs  
Kille, Natalie  
King, Brian & Regina  
Knight, Jane  
Knudsen, Jim & Olivia  
Krebs, Monika  
Kristoffersen, Christina  
Lambert, Jo & Larrance, Michael  
Larson, Eric & Clara  
Lauer, James  
Lechuga, Paul & Lisa  
LeDoux, Deborah & Gross, Tom  
Lee, Tosca

Lessard, George & Jo  
Lindemer, Curt & Charmane  
Liu, Amy  
Llamas, Veronica  
Lunn-Doll, Suzanne  
Macias, Christina  
Mariano-Denning, Patricia & Denning, Jeff  
Marshall, Derek  
Martin, Chris & Pam  
Mathey, Mike & Dana  
McClung, Thomas  
McCue, Donald & Susan  
McDermith, Brad  
Mee, John & Johnson-Mee, Lilibeth  
Miller, Vicky  
Miner, Norman & Mary Jane  
Mitchell, George & Margaret-Ann  
Morris, Pat  
Morris, Phillip & Judy  
Mote, Gordon & Raylene  
Multani, Harbans & Renu  
Ojo, Adekunle & Kathleen  
O'Neill, Michael & Colleen  
Paxton, Nathan  
Paypal Charitable Giving Fund  
Ray, Andrea  
Raynes, Jeff & Jeanne  
Redlands Unified School District  
Regalado, Sharon  
Rettig, Robert & Christi  
Reynolds, Mike & Sue  
Rice, Ann  
Riesz, David & Karen  
SCE International (Matching)  
Schadwinkel, Andrew & Mandie  
Schulte, Andreas & Nina  
Shelley, Reed  
Shirvani, Eraj & Celeste  
Siddiqui, Ali & Doris  
Silva, Allyce  
Smith, Debra  
Snowden, Paul & Joanne  
Spafford & Landry, Inc.  
Stadelmann, Mirjam  
Stanfield, Gerald & Janet  
State Farm Insurance

Stewart, Steven & Dona  
Stewart, Kyra  
Stuck, Monte & Nelda  
Thalmayer, Jeff & Brenda  
The Unforgettables Foundation  
Toister, Bob & Kathy  
Towers, Cherie  
Towers, Jim & Cheryl  
Trost, Sally  
University United Methodist Church  
Van Mouwerik, Marcia  
Van Noty, Kristina & Geoffrey  
Vines, Terry & Geneil  
Walker, Steven B.  
Walters, James  
Webster, Treva  
Weisz, Bonnie  
Whitley, Fredrik & Sarah  
Whitmer, Gary & Lynn  
Williams, Patricia T  
Witham, Fred & Jane  
Women Of The First Methodist Church  
Zelener, Howard  
Zielinski, Robert & Eva

**PROVIDER (\$100 - \$249)**

Adams, Mark  
Albert, Robert D.  
Allsup, Michael & Amy  
Anderson, Andrew  
Andriese, Lynn  
Arefffi, Patrick & Carolyn  
Ault, Michelle L.  
Austin, Robert  
Bacca, James & Cole Janey  
Bailey, Ryan & Hernandez, Al  
Battis, Deborah  
Beardsley, Lloyd & Heidi  
Bell, Brian & Jody  
Benson, John & Joan  
Berkshire Hathaway HomeServices California  
Beswick, Carole  
Bitterlich, Nidia  
Blackman, Sandra  
Boon, Teri  
Boone, Steve & Liz  
Borkowski, Eleanor  
Bosman, Michael

Bounds, Jeffrey & Venita  
Box Prospecties  
Breuer, Laura  
Brink, Kathy  
Brinton, Lee & Kate  
Brown, Gil & Carol  
Broyde, Jeffrey & Kathleen  
Buchanan, Willard & Carol  
Bucher, Joe & Deanna  
Burgess, Jan  
Burk, Peter & Joyce  
Burke, Jack  
Butler, Martha  
Calimesa Breakfast Lions  
Candelaria, Thomas  
Capella, Ann  
Capitis Real Estate  
Carlson, Richard & Sandra  
Casebook PBC  
Catton, Jack & Kehr, Peggy  
Chagolla, Robert  
Chakrapani, Raji & Pani  
Childers, Liz  
Chonkich, George & Nanette  
Christopherson, Andrew & Lindsey  
Clarke, Kimberly  
Clements, Mike & Sherrie  
Clinton, Robert & Earlene  
Clizbe, Jim & Ellen  
Cortese, David & Melody  
Cotton, Maggie  
Cover, Richard & Francesca  
Crabtree, Peggy  
Dawes, Cheri  
Dawson, Diane  
De La Garza, Ray  
Diaz, Lily  
Dickson, Meagan  
Dison, Curtis & Escobar-Dison, Jennifer  
Dodson, Kaitlyn  
Doolittle, Elizabeth  
Drake, Ron & Marla  
Esquivel, Jonathan  
Evelyn-Veere, Sandi  
Fails, Terence  
Feller, Ralph

Fellows, Ben & Fellows Olteanu, Marta  
Ferguson, Scott  
Ferracone, Donna  
Fields, Jerry & Staci  
Fierro, Lisa  
First Presbyterian Women  
Flater, Drew & Elizabeth  
Florence, Paula  
Flores, Douglas & Wendy  
Fogleman, Kent & Mary  
Foglio-Walden, Kimberly  
Fornelli, Justin  
Fowler, Glen & Heather  
Franke, Elizabeth A.  
Frazier, James D. & Betty  
Fry, Ted & Olga  
Fuller, Efram & Marie  
Fuller, Samuel & Margaret  
Gable, Nate & Christie  
Galvan, Ian  
Galyen, James  
Gamboa, Arthur  
Garcia, Steve  
Garcia, Steven  
Gardner, Mark & Marita  
Gaulding, Samantha  
George, Roy & Shoba  
Gifford, Steve  
Gooderum, Paula  
Goodrich, Beth  
Greene, Stacey  
Greenfield, Norma  
Guillen, Sam  
Gutknecht, Aurora  
Hackenberg, Dorothea  
Haden, Rory  
Harry, Shirley  
Hawkins, Holly  
Hearth, Nicolas  
Hemme, Karen & Kiel  
Hisada, Paul & Goldstein, Susan  
Hoghaug, Jon & Cindy  
Holmes, J.E. & Mary Jo  
Houser, Kenneth  
Igler, David  
Imbert, Frank & Tricia

Jacques, Chris & Christie  
Jauregui, Brittany  
Jervis, Chuck & Betty  
Johansen, Lawrence & Judy  
Johnson, Theresa  
Jutzy, Kenneth & Robyn  
Kattenhorn, Jon  
Kaura, Brian & Valerie  
Kent A Cooper, EA  
Kerr, John & Barbara  
Kimball, Duane & Jacqueline  
Knobler, Suze  
Knox-Allen, Marlene  
Kohlmeier, Pat  
Kolpien, Beth  
Koonce, Alexander & Armstrong, Dana  
Kriskey, Kathy  
Lane, Ken & Laurie  
Lange, John  
Lantier, Ward  
Larimore-Bigart, Teresa  
Larios, Rafael  
Larson, Sherry  
Lavoie, Rich  
Lawyer, Seth  
Lazar Commercial Real Estate  
Leavitt, Pamela  
Lee, Jeremy  
Lentz, Tammy  
Lesh, Craig  
Lightfoot, Harrison & Diane  
Lindsey, Josh  
MacLean, Marsha  
Malki, Alan & Janet  
Marcum, Bert  
Markos, Gregory & Joyce  
Martinez, Jeff & Susan  
Marutsos, Irene  
Mason, William & Mary  
Mast, Helen  
Matthews, Charles  
McCraw, Scott & Foster, Bernice  
McDowell, Michael & Meryl  
McIntosh, Donna  
McKevitt, Linda  
McLoughlin, Frank & Mary

McMeans, Todd  
Mendoza, Danielle  
Metzinger, Graham  
Montessori In Redlands  
Morales, Olivia  
Morrill, Ken & Roberta  
Morrison, Deanne  
Mullen, Tom & Bethany  
Munson, Laurel  
Nece, Ted & Cathy  
Neff, Roberta  
Nichols, Jay  
Nieland, Tobi  
Nimmo, Heidi & Spears, Jeff  
Noerr, Robert & Beverly  
O'Connell, Danny & Maureen  
O'connor, Lori  
Oglesby, Jennifer  
Olson, Lisa  
Ontiveros, Helen  
Oppenheim, Patsy  
Orland, Margie  
Orr, Norma  
Pacini, Ralph & Christine  
Peake, Andrew  
Perez, Kristy  
Perkins, Neale & Patricia  
Perszyk, Lawrence & Gail  
Peske, Jonathan & Wendy  
Petite, Steve & Mary Frances  
Playworks  
Purvis, Wilbur & June  
Quanstrom, William  
Raff, David & Cindy  
Ramos, Mike & Gretchen  
Redinger, Sarah  
Reeves, Martina  
Regalado, Yolanda  
Reid, Bryan & Susan  
Remington, Donita  
Rendulich, Marilee  
Results Group  
Richards-Dinger, Keith & Kari  
Rick, Janise  
Riggs, Cheryl  
Roche, Geoff & Rachel

Romo, Dawn  
Rylett, Rick & Linda  
Sakaguchi, Tom & Ellen  
Sander, Renee  
Sanders, Jerry & Beth  
Sanderson, Beverly  
Santillan, Natgely  
Scharer, Juley  
Schilling, Craig & Cathy  
Schneider, Susan  
Schulteheinrich, Ruth  
Seibly, Deborah  
Serrao, Fran  
Shippee, David  
Shrivastav, Brijesh & Mamta  
Shuler, Tor & Julie  
Simmons, June  
Sizemore, Frank & Marilyn  
Soria, Mark  
Spilsbury, Ned & Lauren  
Stifel  
Stowitz, Mark & Joanne  
Swayze, Dan & Betty Lui  
Templeton, Julie A.  
The Beach House  
Theodorou, Anthony & Georgia  
Tincher, Bob & Ann  
Tolar, Ken & Claudia  
Tollefson, Nicholas & Julie  
Top Dawg Auto Repair  
Totzke, Bob & Sue  
Trood, Kim  
Tubbs, Duane & Cheryl  
Two Guys Pasta and Pizza  
Uber-Zak, Lori  
United Health Group  
University Of Redlands - Student Life  
Upshaw, Claude & Annie  
Van Cleve, Lois  
Van Grow, Helen  
Vieley, Robert J.  
Wagnon, Alana  
Wagoner, Jill  
Waite, Stan & Julie  
Watson, Jennifer  
Wee, Ashley

Wesley, Darrell J.  
West, Judy  
Whiteley, Daren & Maria  
Wilbur, Sharen  
Williams, Bryan  
Williams, Raymond & Pamela  
Wilson, Chris & Wanda  
Wong, Dennis & Susan  
Ybarra, Abigail  
York, Kendall  
Young, Dave  
Yow, Jocelyn

#### **IN-KIND DONORS:**

AAA Alarm Systems  
Adams, Diane  
Ahern, Tom & Alice  
Aizzel Family  
Alarcon, Anthony  
Allen, Mike & Pam  
Allissi, Anna  
Allsup, Mike  
Almgren, Jennifer  
AmazingCo  
Amazon Fulfillment Center LGB4  
Angels Baseball  
Anonymous  
Aquarium of the Pacific  
Aquinas High School - Vicariate Groups  
Aragon, Larry  
Arbor Life Spa  
Arellano, Roxanna - Baby Angel Salon  
Arlington, Edward  
Arnold's Backflow  
Arthur Murray Dance Studio of Redlands  
Arzaga, Sarah  
Baby Angel Salon - Samantha  
Bahama Bucks  
Barich & Associates  
Beasley, Marge  
Beltran, Alan  
Black Orchid Designs  
Bloomquist, Michelle  
Boatman, Chris  
Boatman, Robert  
Bon Appetit - Cary Wheeland  
Boone, Steve

Boston, Debora  
Brandt, Judith  
Bromberg, Jason  
Bryan, Ann & Vaughn  
Bryan-Pierce, Kristin  
Burgeson's Heating & Air  
IN-KIND DONORS  
Burgess, Larry & Char  
Burrage Mansion  
Burton, Lee  
Bushnell, Judy  
Calderon Family  
California Assn of Nurse Practitioners  
Capella, Ann  
Caprice  
Carlson, Anne  
Carlson, Leah  
Carolyn's Café  
Carroll, Traci  
Carruthers, Mary  
Castle Wood Cottages  
Cauthron, Julie  
Cejka, Kathleen  
CEMEX Redlands  
Chand, Amol  
Cheesewalla  
Chick-fil-A  
Christiansen, Rita  
Citrograph Printing Co.  
CMLA Redlands  
Cohoe, Garry & Elaine  
Cole, Janey  
Constant, Linda  
Contour Dermatology  
Correia, Kevin & Drew  
Coyote Oaks Vineyards  
Cullen, Chris  
Danisa, Amy  
Darby's  
Davis, April  
Davis, Edward  
Derrenbacher, Bill  
Doll, Jake & Suzanne  
Doolittle, Beth  
Dorres, Zion  
Dostadler, Paul

Driessnack, Bob & Paula  
Eadie and Payne, LLP  
Eastside Christian Church  
Elder, Todd  
Ely, Lorna  
Esri Employees  
Evans, Rob  
Evans, Tim & Debbie  
Evelyn-Veere, Sandi  
Fagan, Gary & Marcia  
Fern Cottage Florals  
Fiesta Village  
First Congregational Church  
First Lutheran Church  
First Presbyterian Church  
Flynn, Mikiko  
Ford, Pamela  
Gara, Rebe  
Garcia Bacon, Maya  
Garner Holt Education Through Imagination  
Garnett, Ed  
Garrett, Jenny  
Gonzales, Veronica  
Graffham, Maryann  
Green, Sheri  
Guillen, Robert  
Gutjahr Family  
Happy Camper Creamery  
Harmelink, Roger & Marjorie  
Harvey, Jan  
Hatfield, Bill & Lori  
Hennon, Terri  
Henry, Tracy  
Hernandez, Nicholas  
Herrmann York Winery  
Highlands Giving Garden  
Holliday, Arlinda  
Honduras Kitchen  
Hops and Spokes Brewing Company  
Hutchinson, Linda  
In-N-Out  
International Day Spa  
J.D. Myers  
Jacinto Farms  
Jackson, Barbara  
JDI Distribution

Johnson, Karen  
Johnston, Blandina  
Jones, Eva  
Kaiser Grille  
Keller Willams Redlands  
Kennedy & Kennedy  
Kennedy, Connie  
Kern, Blaine & Renee  
Kimberly Crest  
Kimberly Juniors  
Kith & Kissui  
Knights of Columbus  
Lappert's Ice Cream  
Laycook, Bruce & Fleury  
LeBlanc, Karen  
Lincoln, Randy & Dianne  
Linkhart, Jerry  
Longoria, Sandra  
Los Angeles Museum of Natural History  
Losciale, Joanna  
Lott, Kim  
Lux Dumps  
Machain, Valerie  
Marinelli, Crystal  
Marshall, McKenzie  
Martin, Faydell  
Martinez, Susan  
McAllister, Caroline  
McBride, Michelle  
McCann, Skye - Baby Angel Salon  
McCullough, Faith  
McLaughlin, Diana  
McMahon, Dave & Ann  
Meeker, Larry  
Messah, Michael  
Meyer, Marvin  
Miracle Springs Resort & Spa  
Moore, PJ  
Morasco, Sue & TenBrink, James  
Morongo Golf Club at Tukwet Canyon  
Mozart's  
Mudd, Regina  
Munz, Larry & Cindy  
Neuendorff, Diana  
Newport Whales  
Nothing Bundt Cake

O'Connor, Nancy  
O'Keefe, Tommie  
Ontario Reign  
Orangewood High School Black Student Union  
Pacific Wealth Strategist  
Palm Springs Aerial Tramway  
Palm Springs Air Museum  
Paradox Church  
Patterson, John & Myra  
Paws  
Pendley, Anneli  
Petersen Automotive Museum  
Petros, Dennis & Joanne  
Phillips, Jon & Sabine  
Pinuelas, Melissa - Baby Angel Salon  
Planes of Fame Air Museum  
Plymouth Village Residents  
Polack, Louis  
Powell, Ruth Lorraine  
Preston, Lisa  
Pro Pipe & Supply  
Pur Grace - Arie Howard  
Pur Grace - Cristi Hrdlicka  
Pur Grace - Gina Mendoza  
Pur Grace - Tish Moore  
Raff, David & Cindy  
Raising Cane's Chicken Fingers  
Ramirez, Angelica  
Ramirez, Fabiola  
Ramirez, Lorenzo  
Redlands Chamber of Commerce  
Redlands Community Hospital  
Redlands Country Club  
Redlands Oyster Cult  
Redlands Plumbing and Air  
Redlands Print  
Redlands Sourdough  
Redlands Symphony  
Redlands United Church of Christ  
Remy, Mike & Diane  
Reverse Gravity  
Richards, Cindy  
Rick, Janise  
Riehm, Margaret  
Rill, Chris

Ritual Brewing Co.  
Rochford, Tim & Carol  
Rodriguez, Drew & Marcia  
Rodriguez, Erika  
Rodriguez, Leticia  
Rodriguez, Lorraine  
Rozema, Randy & Barbara  
Rudrich, Horst & Aleta  
Rui's Shanghai Bistro  
Ruiz, Linda  
Samson, KC  
San Bernardino Symphony Orchestra  
San Diego Zoo Wildlife Alliance  
Sanchez, Alex  
Sanders Farm  
Sanders, Beth  
Sandos, Tish  
Santa Ana Zoo  
Schelin, Gina & Gary  
Schmitz, Regina  
SeaWorld San Diego  
Seccombe, Melodee  
Serendipity Salon  
Shadow Mountain Resort & Club  
Shaw, Joseph & Rachel  
Shaw, Rita  
Shelffo, Rod & Lori  
Skirball Cultural Center  
Skull and Crossguns  
Skypark at Santa's Village  
Slayback, Kathy  
Slow Bloom Coffee Shop  
Smudgepot Brewing Company  
Snodgress, Jim & Carol  
Sochor, Elizabeth  
Stanners, Lisa  
Stanners, Theresa  
Steinbrecher, Debi  
Stell Coffee and Tea  
Stephen Wormser Photography  
Stockton, Shelli  
Stuck, Nelda  
Suburu of America  
Suds Brothers Express Car Wash  
Sullivan, Donna  
Sullivan, Tim

Sumida, Stuart  
Szukalski, Sandy & Bern  
The Grove School  
The Huntington Library  
Trood, Kim  
Two Guys Pasta & Pizza  
Tybur, Darlene  
U of R Music Department  
Uber-Zak, Lori  
Underwood, Debbie  
URSA  
Village Bread  
Wade, Nancy  
Walmart Redlands  
Walsh, Sherry  
Warnell, Kathy  
Watson, Steven  
Weisser, Stan & Ellen  
Wells, Suzy  
Wilburn, Chuck & Cindy  
Willason, Linda  
Wilson Creek Winery & Vineyards  
Witham, Fred  
Wooley, Luke  
YCOG  
YMCA of the East Valley  
Yucaipa High School CRY-ROP Criminal Justice Students  
Yucaipa Valley Optometry  
Zdrojewski, John & Donna  
Zoom Mailing

# IN MEMORY

**In Memory of Ramona Allocca**  
Christina Kristoffersen

**In Memory of Robert Best  
& Fred Hare**  
Robert & Earlene Clinton

**In Memory of Dale & Gail Bomberger**  
Tracy Bomberger

**In Memory of Jack Brown**  
Peter & Melissa Koss

**In Memory of Steve Farlander**  
Athens Administrators

**In Memory of Grandpa Felipe  
& Papa Roger**  
Melissa Gonzalez

**In Memory of Glenna Finley**  
Diane Chang

**In Memory of Kelly Flood**  
Sydney Flood

**In Memory of James Folmer**  
Travis Ducsay

**In Memory of Candy Hadley**  
Merrilee Hadley-Scofield

**In Memory of Bill Heitritter**  
Mitchell Heitritter

**In Memory of Gloria Hovey**  
Alexis Glaze  
Bob & Betsy Heinze  
Ward & Barbara Krause  
Helen Mast

**In Memory of Gladys Kassay**  
Thomas Candelaria

**In Memory of Karyn Helbron Kasvin**  
Ron & Nikki Helbron

**In Memory of Robert H. Lavoie**  
Rich Lavoie

**In Memory of Danny, Manuel,  
Freddie Lopez**  
Martina Reeves

**In Memory of Andrew Matthews**  
Charles Matthews

**In Memory of Debora Miller**  
Efram & Marie Fuller  
Vicky Miller  
Norman & Mary Jane Miner  
Deanne Morrison  
Bernie & Evelyn O'Prey

**In Memory of JoAnn Miller**  
Christy Slattery

**In Memory of Mom & Dad**  
Duane & Jacqueline Kimball

**In Memory of Justin Palmer**  
Marsha MacLean

**In Memory of Carole Peterson**  
Mary Pennachi

**In Memory of Teresa Rimmer**  
Linda Lavin

**In Memory of Moni Schoenmann**  
Laura Breuer  
Vanessa Franko  
Tony Jacinto  
William & Mary Mason  
Erica Rossi  
Trudy Waldron

**In Memory of Mara Simmons**  
Barbara Simmons

**In Memory of Jeffrey Waldron**  
Cheryl Howard  
The Corneille Family  
The Medlin Family

**In Memory of Robert A Weisz**  
Bonnie Weisz

# IN HONOR

**In Honor of John Bandcroft's  
100th Birthday**  
Heidi Nimmo & Jeff Spears

**In Honor of Dianne Burgeson  
& Kathi Cochran**  
Shimoff Law Corporation

**In Honor of Donna  
Cadwallader's Birthday**  
Kathleen Matlock

**In Honor of Nan Emerson**  
Lee & Kate Brinton

**In Honor of James P. Frazier**  
Eric Frazier

**In Honor of Michele Holcomb**  
Real Endpoints

**In Honor of Emer Maloney**  
Andiamo

**In Honor of Ann McMahon**  
Eraj & Celeste Shirvani

**In Honor of Lura Paxton**  
Nathan Paxton

**In Honor of Wilbur Purvis 90th Birthday**  
Jacob & Sharon DeHoog  
Suzanne Derby  
Michelle Light  
Harrison & Diane Lightfoot  
Jeanne Ludikhuize  
Marianne Trost

**In Honor of Mike Remy**  
Stellar Solutions Foundation

**In Honor of Karen Riesz**  
Adekunle & Kathleen Ojo

**In Honor of Sally Robertson's Birthday**  
Anonymous  
Rich & Carolann O'Donnell  
Brian & Sherry Walsh  
Randy & Tammy Young

**In Honor of Jim Rynerson  
& Julie Rynerson Rock**  
Dan Haueter & Steven Villa

**In Honor of Beth Sanders  
Birthday**  
Guy Mersereau

**In Honor of Brent Wild**  
Cheri Blue

**In Honor of Cala Wren's  
7th Birthday**  
Chris Delorenzo  
Michael Echenique  
Jacqueline James  
Christine Lauzon  
Preya Mainville



# THE 1898 SOCIETY MEMBERS

Thank you for your ongoing support of Family Service. Your generous promise of a planned gift helps ensure the long-term sustainability of our mission to “Alleviate poverty, encourage self-sufficiency and promote dignity of all.”

**Dr. David Bragg**

**Vaughn & Ann Bryan**

**Larry & Charlotte Burgess**

**Keith & Deborah Crowley**

**Tom & Julie Cutler**

**Donna Ferracone**

**Paul & Juliana Foster**

**Samuel Edison and Sharalyn Hamilton**

**Bill & Lori Hatfield**

**Tom & Karen Kaney**

**Barbara Riordan**

**Tilden & Nancy Spencer**

**Ron Stephany**

**Stan & Ellen Weisser**



## Joining the 1898 Society

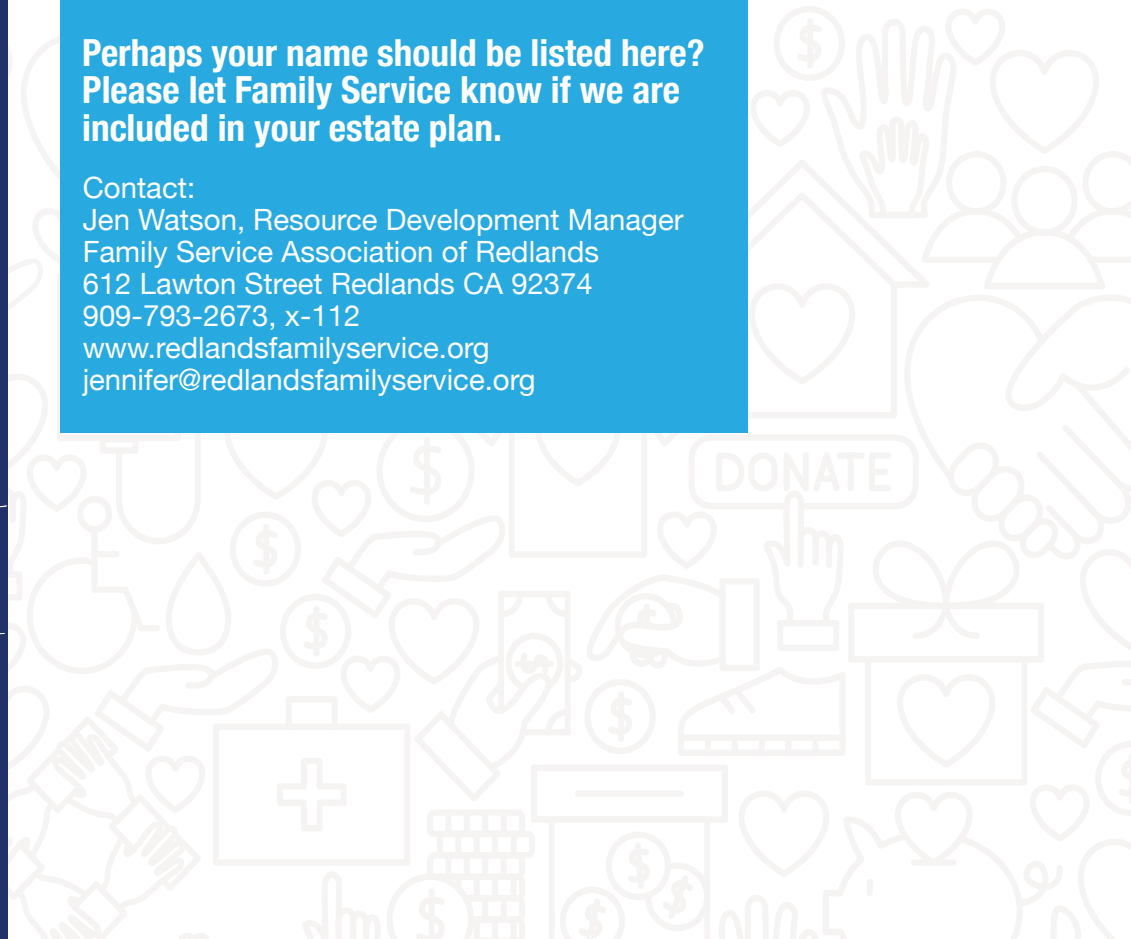
The 1898 Society is comprised of those who have chosen to support the agency through a planned gift. Giving in this way shows your passion and commitment to help FSA do its work during your lifetime and beyond. To be part of society, a donor includes Family Service in their estate plan, whether it be through securities, real estate, retirement plans, or other forms of planned giving.

Do you have an estate plan that includes FSA? Would you like to find out more about including FSA in your estate plan? Contact FSA to find out more about joining the other generous and forward-thinking people who make up the 1898 Society.

**Perhaps your name should be listed here?  
Please let Family Service know if we are  
included in your estate plan.**

Contact:

Jen Watson, Resource Development Manager  
Family Service Association of Redlands  
612 Lawton Street Redlands CA 92374  
909-793-2673, x-112  
[www.redlandsfamilyservice.org](http://www.redlandsfamilyservice.org)  
[jennifer@redlandsfamilyservice.org](mailto:jennifer@redlandsfamilyservice.org)





**Family Service Association of Redlands**  
612 Lawton Street | Redlands, CA 92374-3013  
909.793.2673 | Fax: 909.793.7324  
[www.redlandsfamilyservice.org](http://www.redlandsfamilyservice.org)

NON-PROFIT ORG.  
U.S. POSTAGE  
**PAID**  
SAN BERNARDINO, CA  
PERMIT No. 1217



Save the Date!

# *Dinner in the Grove*

Saturday  
September 27th 2025

